

Bayboro 625 Sixth

625 6th Avenue South, St. Petersburg, FL 33701



This 120,000 sf medical office building is located on the campus of Bayfront Health and offers an eight-story attached 645 spot structured parking deck as well as elevated climate controlled skywalks to Bayfront and Johns Hopkins All Children's Hospital.

HIGHLIGHTS

- 1,600 - 8,000 sf suites available
- All suites are in shell condition
- Significant landlord improvement allowance
- Terms from 5 - 15 years
- Located on the campus of Bayfront Health
- Skywalks to Bayfront Health and Johns Hopkins All Children's Hospital

CURRENT TENANTS

Bayfront Health St. Petersburg
James Heart Center
Pediatric Cardiology Associates
All Children's Perinatal Specialists

Advanced ENTs of Tampa Bay
Pediatric Neurology Associates
Veteran's Orthopedic
The Hernia Center

New Beginnings OB/GYN
Hanger Clinic Prosthetics
& Orthotics
Tropical Smoothie Cafe



OPTIMAL OUTCOMES

Planning, Design, Development

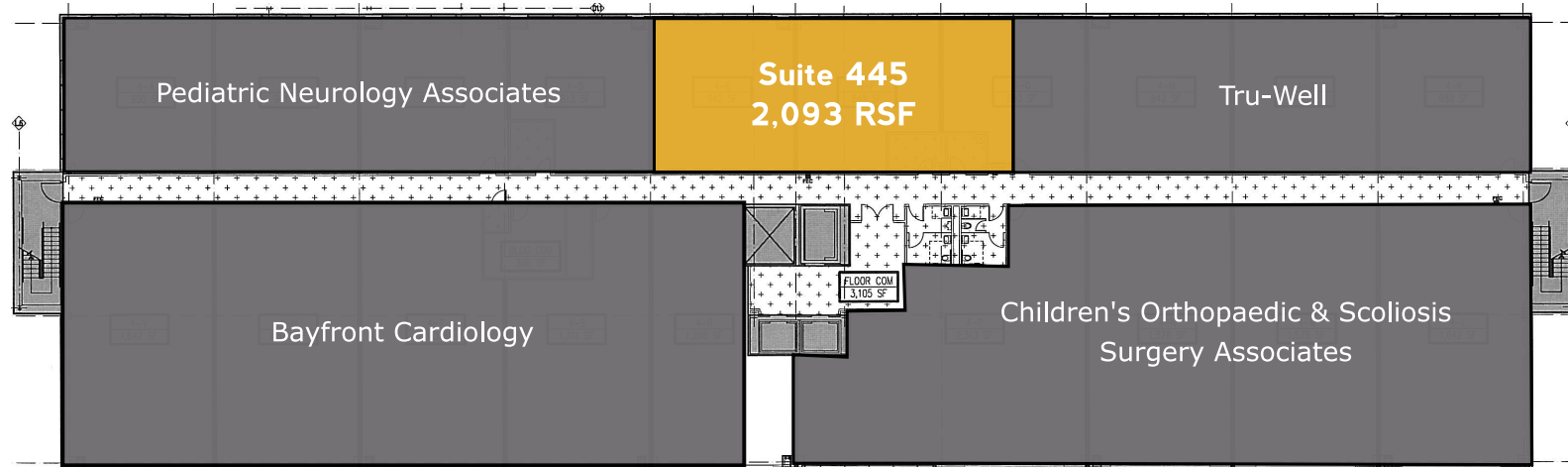
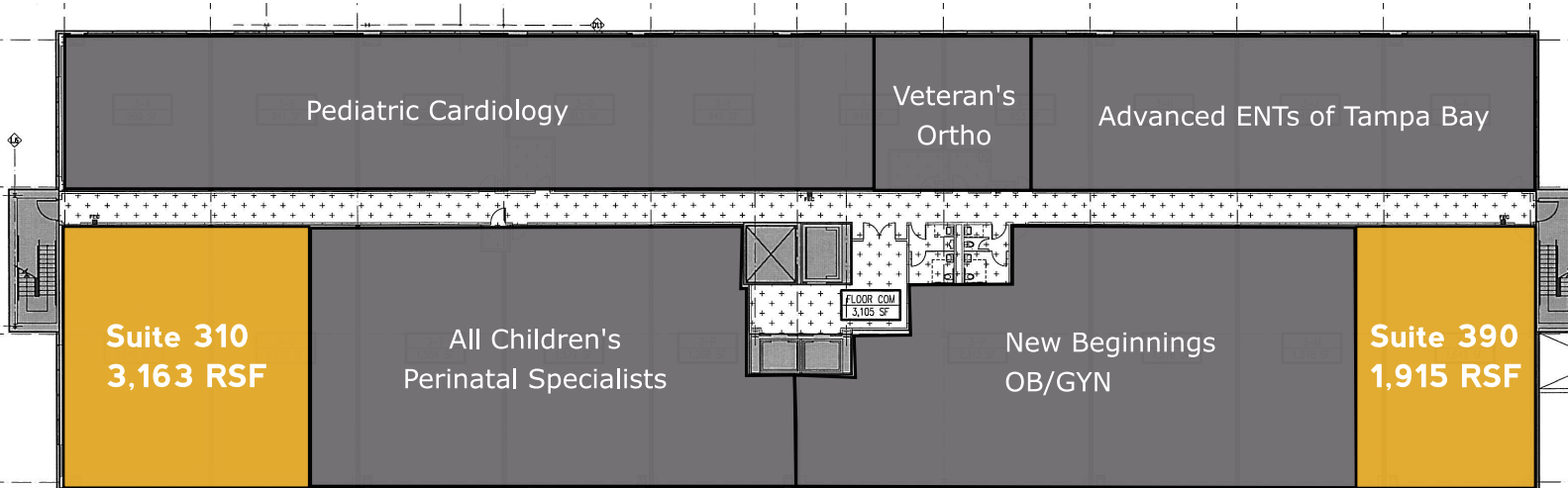
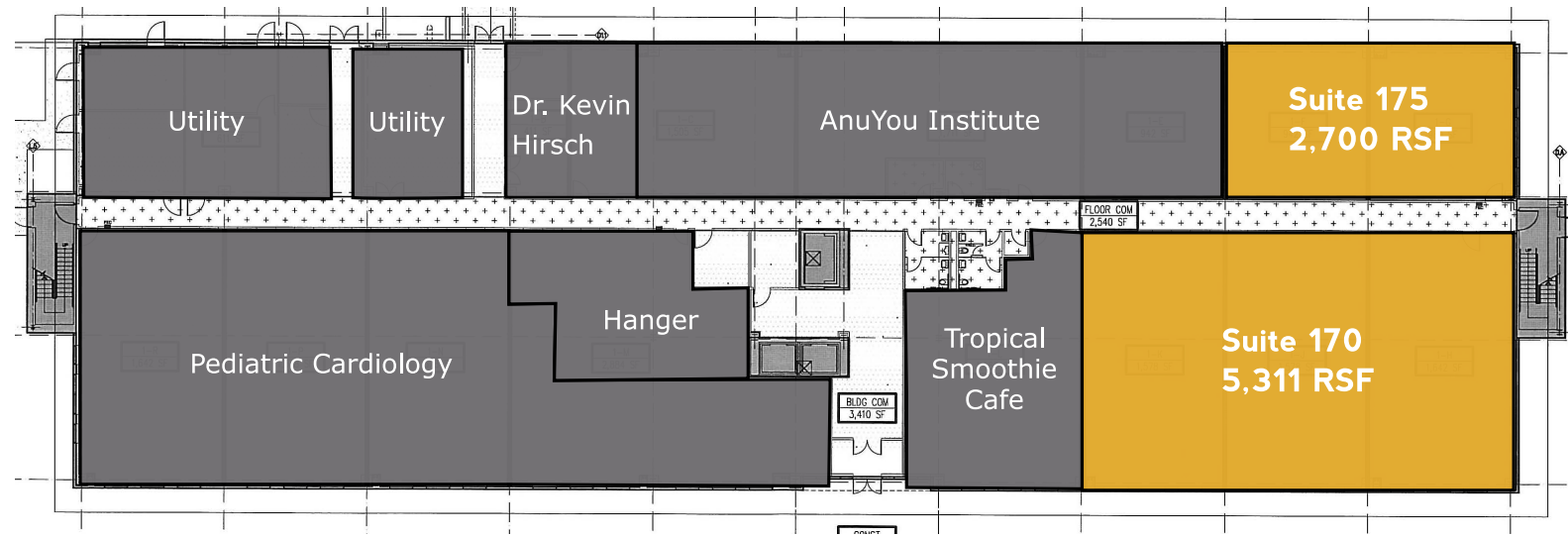
Contact for more information:

Andrew Boggini | 727.895.8902

aboggini@optimal-outcomes.com

Bayboro 625 Sixth

625 6th Avenue South, St. Petersburg, FL 33701



Contact for more information:

Andrew Boggini | 727.895.8902
aboggini@optimal-outcomes.com